



## COMMUNITY PARTNERS



AND MORE



CONTACT A REPRESENTATIVE

 [BlueEnvelopeProgram@sdsheriff.gov](mailto:BlueEnvelopeProgram@sdsheriff.gov)

 [sdsheriff.gov/blueenvelope](http://sdsheriff.gov/blueenvelope)

SAN DIEGO COUNTY

# BLUE ENVELOPE PROGRAM



## PURPOSE

The purpose of the program is to promote inclusivity and enhanced communication and accommodation between law enforcement, emergency services, and community services personnel and community members with a condition or disability where additional accommodations or awareness could be helpful.



Scan the QR code to learn more and to find participating locations to pick up free Blue Envelope Program material.





# BLUE ENVELOPE OUTREACH MATERIAL

The following items are available for free at participating locations:

- **Blue Envelope**
- **Wallet Information Card**
- **Lanyards**
- **Seat Belt Covers**
- **Button Pin**
- **Ribbons**
- **Key Chains**
- **Bracelets**
- **Stickers**

## ABOUT THE BLUE ENVELOPE PROGRAM

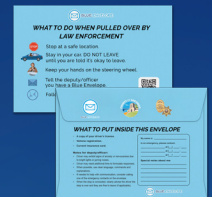
San Diego County is proud to offer the Blue Envelope Program. The program is designed to promote inclusivity and serve as an enhanced communication awareness tool between law enforcement officers and community members diagnosed with a condition or disability such as Autism Spectrum Disorder, dementia, anxiety, or other conditions that might require additional accommodations or awareness during a law enforcement interaction.

The program was designed in collaboration between the San Diego County Sheriff's Department, the San Diego County Board of Supervisors, community partner organizations, and the San Diego County Police Chiefs' and Sheriff's Association.

## HOW IT WORKS

The Blue Envelope Program works by allowing an individual to readily display the Blue Envelope logo or present a Blue Envelope upon contact with law enforcement or other community service personnel.

The Blue Envelope branded products can contain the individual's identification, contact information or pertinent vehicle operating documents such as the vehicle registration and proof of insurance.



The Blue Envelope Program does not have a registry component, therefore, all components of the program are voluntary and self-implemented.

To pick-up your free Blue Envelope Program material, visit a participating law enforcement agency, community partner organization, or County of San Diego facility.

To learn more watch the  
Blue Envelope Program video:



### WHAT TO PUT INSIDE THIS ENVELOPE

- A copy of your driver's license
- Vehicle registration
- Current insurance card

#### Notes to deputy/officer:

- Driver may exhibit signs of anxiety or nervousness due to bright lights or sirens.
- Driver may need additional time to formulate responses.
- When feasible, use clear language, commands and explanations.
- Consider communicating the driver is okay or to assist envelope to be picked up.
- Once the driver is concluded, clearly advise the driver they are free to leave.

My name is \_\_\_\_\_

In an emergency, please contact:

at ( ) \_\_\_\_\_

at ( ) \_\_\_\_\_

at ( ) \_\_\_\_\_

Special notes about me:

